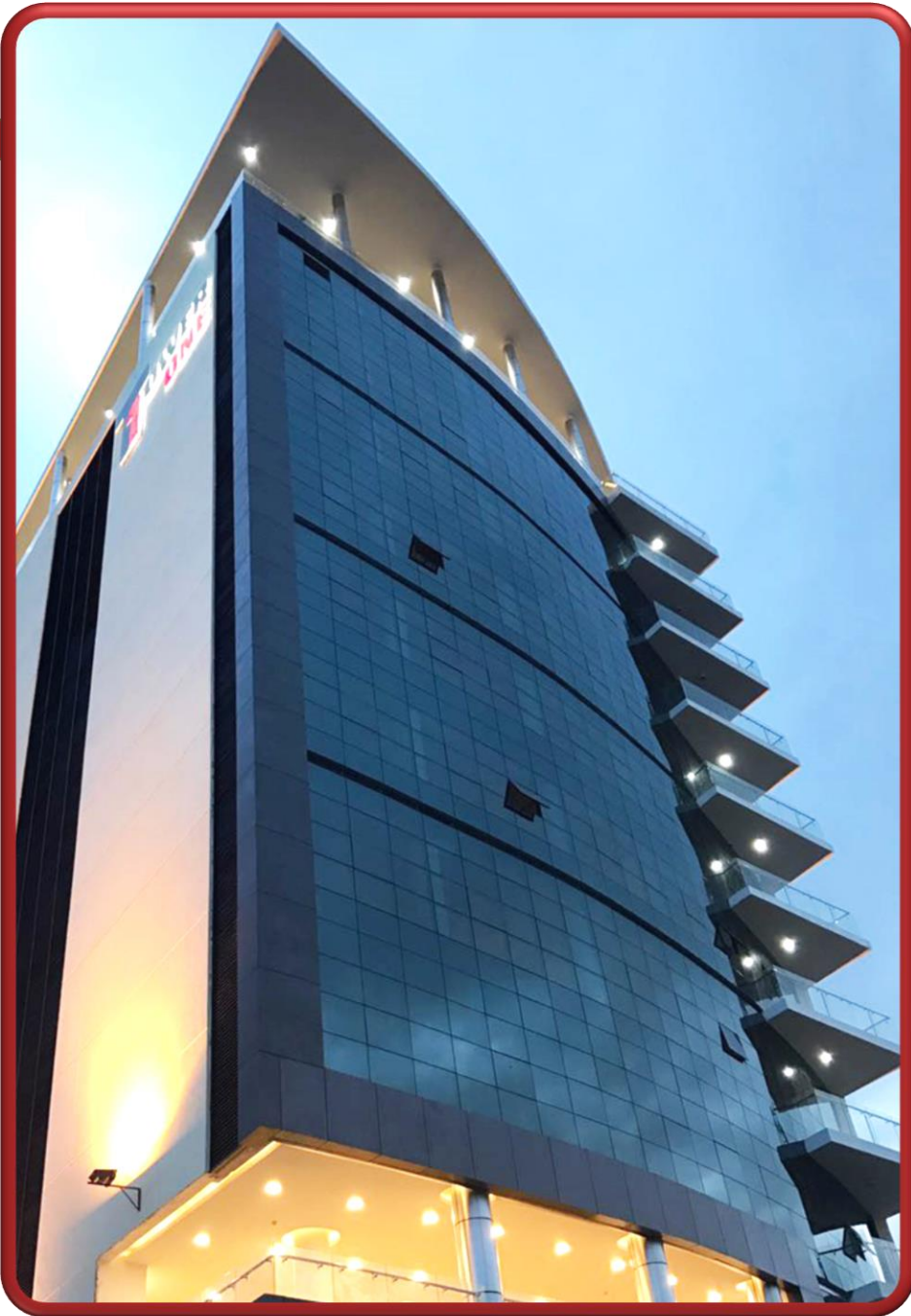


# ANA GENERAL TRADING



## Company Profile 2025



# Company Profile Introduction

ANA General Trading is a dynamic and diversified enterprise engaged in agriculture, construction machinery, food commodities, and genuine Toyota spare parts. With a strong commitment to quality, reliability, and customer satisfaction, we provide products and solutions that support growth and efficiency across multiple sectors.

In agriculture, we supply advanced farming equipment and machinery designed to boost productivity and promote sustainable practices. Our construction machinery division offers reliable, high-performance equipment for infrastructure and development projects, serving contractors, builders, and government entities.

Our food commodities division ensures the consistent supply of essential food products, sourced and delivered with a focus on quality and affordability. In addition, we specialize in the distribution of genuine Toyota spare parts, supporting the automotive market with durable and trusted components to keep vehicles running smoothly.

At ANA General Trading, we are driven by integrity, innovation, and a customer-first approach. Whether you are a farmer, contractor, retailer, or automotive professional, we are your trusted partner for dependable products and long-term success.

**Company Director: William James**



## Our Vision

To be a leading and trusted provider of high-quality agricultural solutions, construction machinery, food commodities, and genuine automotive spare parts across regional and international markets — empowering progress through innovation, reliability, and service excellence.



## Our Mission

To deliver reliable, cost-effective, and sustainable products and services that meet the evolving needs of our clients in agriculture, construction, food supply, and automotive industries. We aim to build lasting partnerships by offering superior value, prompt delivery, and unmatched customer support.

# Core Values

**Integrity** – We conduct our business with honesty, transparency, and respect for all stakeholders.

•**Quality** – We are committed to offering only top-grade products and services that meet international standards.

•**Customer Focus** – We prioritize our clients' needs and work diligently to exceed their expectations.

•**Innovation** – We embrace change and continuously seek better ways to serve our markets.

•**Reliability** – We deliver on our promises and stand by the dependability of our products and services.

•**Sustainability** – We support responsible business practices that contribute to long-term environmental and economic stability.





# Our Services

- Agricultural Equipment Supply**

Provision of modern and efficient farming machinery and tools to enhance productivity and sustainability in agriculture.

- Construction Machinery**

Supply of heavy-duty construction equipment and machinery for infrastructure and development projects.

- Food Commodities Trading**

Sourcing and distribution of high-quality food products, including grains, pulses, and other essential commodities.

- Genuine Toyota Spare Parts**

Import and distribution of authentic Toyota automotive spare parts for maintenance, repair, and wholesale supply.

- Import & Export Services**

Comprehensive trade solutions for clients seeking reliable import/export services across our areas of expertise.







# Dumper Trucks

Mining / Construction Machinery





# Wheel Loader

Mining / Construction Machinery



















## Sugar Products (Brazilian)



## Wheat Products



## Rice Products (Thailand)



## Sunflower Oil Products (Malaysia)



# Contact Us

## ANA General Trading Co.

Contact Details:

Email:  
gt3ana@outlook.com

UAE Address:  
P.O.Box 15149, Dubai

Tell:

+971508946733

Whatsapp

0017024880292